



**MICROWATT**  
Making Safety Work

Tollfree in Western Canada: 1-888-388-1592  
microwatt.com • mwsales@microwatt.com

SALES • SERVICE • SUPPORT

## Dual Modular Safety Shutoff Valves with Vent Line Adapter

**DMV/6x2 Series**  
**DMV/6x4L Series**  
**DMV-ZR/6x2 Series**

**DUNGS**®  
Combustion Controls



**Two normally closed safety shutoff valves in one housing; each with the following approvals.**

### UL Recognized

- UL 429
- File # MH16727

### CSA Certified

- ANSI Z21.21
- CSA 6.5
- Marked C/I
- File # 157406

### FM Approved

- Class 7411
- Report # J.I.1Z6A0.AF

### Commonwealth of Massachusetts Approved Product

- Approval code G1-1107-35
- Gas Safety Shutoff Valve

### US and Canadian Models

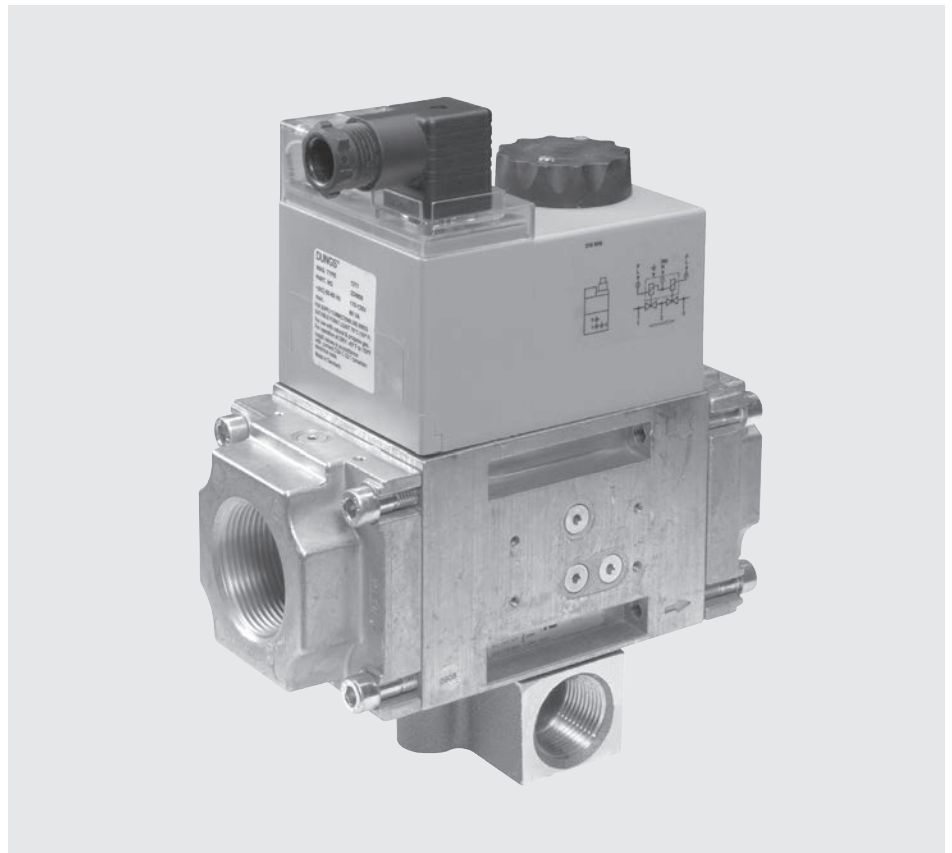
- DMV-D 701/6x2, 7x2/602, and 703/6x2
- DMV-DLE 701/6x2, 702/6x2, and 703/6x2
- DMV-D 7x2/6x4 and 703/6x4
- DMV-DLE 702/6x4 and 703/6x4
- DMV-ZRD 701/6x2, 7x2/602, and 703/6x2
- DMV-ZRDLE 701/6x2, 702/6x2, and 703/6x2

- Main gas connections available: 1/2 in. NPT - 2 in. NPT

### Codes and Standards

This product is intended for installations covered by but not limited to NFPA 86, ANSI Z83.4, ANSI Z83.18, ANSI Z21.13, CSA B149.1 and CSA B149.3.

**DUNGS is an ISO 9001 manufacturing facility.**



### Description

The Dual Modular Valves with Vent Line Adapter (DMV-VLA) combines two safety shutoff valves in one compact housing with a factory installed vent line connection between the two safety valves.

- DMV-D series contain two fast opening and fast closing safety shutoff valves, and max. flow adjustment to vary the flow.
- DMV-DLE series have an extra feature. Valve two is a slow-opening valve.
- DMV valves ending /622, /624L and /612 have proof of closure.
- DMV valves ending in L are rated as NEMA Type 4.
- DMV ZR series valves have two stage operation.

Directly mounting the following accessories creates a compact valve train without additional piping:

- Pressure regulator
- High and low gas pressure switches
- Valve proving system
- DMK Butterfly control valve

### Application

The DMV-VLA is recommended for industrial and commercial heating applications that require two safety shutoff valves with a vent line connection between the safety shutoff valves. The DMV-VLA is suitable for dry natural gas, propane, butane, air and inert gases.

A "dry" gas has a dew point lower than +15 °F and its relative humidity is less than 60 %.

<b>Type</b>	<b>110 - 120 VAC @ 50 - 60 Hz Order No.</b>
DMV-D VLA 701/602	266969
DMV-D VLA 702/602	266970
DMV-D VLA 703/602	266971
DMV-DLE VLA 701/602	266972
DMV-DLE VLA 702/602	266973
DMV-DLE VLA 703/602	266974

<b>Type with NEMA Type 4 enclosure</b>	<b>110 - 120 VAC @ 50 - 60 Hz Order No.</b>
DMV-D VLA 702/604L	267046
DMV-D VLA 703/604L	267085
DMV-DLE VLA 702/604L	267047
DMV-DLE VLA 703/604L	267049

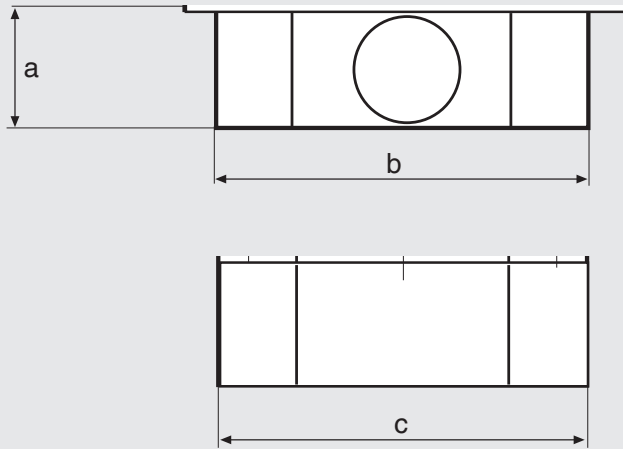
<b>Type with two stage operation</b>	<b>110 - 120 VAC @ 50 - 60 Hz Order No.</b>
DMV-ZRD VLA 701/602	231-844V
DMV-ZRD VLA 702/602	232-025V
DMV-ZRD VLA 703/602	232-079V
DMV-ZRDLE VLA 701/602	267028
DMV-ZRDLE VLA 702/602	232-214V
DMV-ZRDLE VLA 703/602	232-232V

<b>Type with proof of closure</b>	<b>110 - 120 VAC @ 50 - 60 Hz Order No.</b>
DMV-D VLA 701/622	267063
DMV-D VLA 702/622	267018
DMV-D VLA 703/622	267024
DMV-DLE VLA 701/622	267069
DMV-DLE VLA 702/622	267021
DMV-DLE VLA 703/622	267027


<b>Type with proof of closure and NEMA Type 4 enclosure</b>	<b>110 - 120 VAC @ 50 - 60 Hz Order No.</b>
DMV-D VLA 702/624L	267087
DMV-D VLA 703/624L	267085
DMV-DLE VLA 702/624L	267089
DMV-DLE VLA 703/624L	267083

<b>Type with proof of closure and two stage operation</b>	<b>110 - 120 VAC @ 50 - 60 Hz Order No.</b>
DMV-ZRD VLA 701/612	244-730 VP
DMV-ZRD VLA 702/612	267097
DMV-ZRD VLA 703/612	244-734 VP
DMV-ZRDLE VLA 701/612	244-731 VP
DMV-ZRDLE VLA 702/612	244-733 VP
DMV-ZRDLE VLA 703/612	244-735 VP

## Dimensions



- The DMV 701 with VLA has a 3/4" NPT connection on both sides of the valve.
- The DMV 702/703 with VLA has a 1" NPT connection on both sides of the valve. A 1" to 3/4" reducer is required when a 3/4" vent valve is used.

 VLA connection is perpendicular to main gas flow

Type	Dimensions of Vent Line Adapter as mounted to DMV valve [inch]*			Weight [lbs]
	Dimensions of Vent Line Adapter as mounted to DMV valve [mm]			
	a	b	c	
DMV 701	1.8	2.8	2.8	10.1
	46	71	71	4,6
DMV 702	2	4	4	12.1
	50	100	100	5,6
DMV 703	2	4	4	10.3
	50	100	100	4,7

\* Refer to valve sales brochure to determine dimensions of specific valve body and add the dimensions shown above.

### Vent Line Connection

Certain codes and authorities having jurisdiction specify the size of the vent line based on the main gas line diameter.

Typical requirements are:

- For main gas lines up to 1 1/2"; the vent line must be 3/4" minimum.
- For a 2" main gas line; the vent line must be 1" minimum.

We reserve the right to make any changes in the interest of technical progress.

**Dual Modular Safety  
Shutoff Valves with  
Vent Line Adapter**

**DMV/6x2 Series  
DMV/6x4L Series  
DMV-ZR/6x2 Series**

**DUNGS®**  
Combustion Controls



**Karl Dungs, Inc.  
3890 Pheasant Ridge Drive NE  
Suite 150  
Blaine, MN 55449, U.S.A.  
Phone 763 582-1700  
Fax 763 582-1799  
e-mail [info@karldungsusa.com](mailto:info@karldungsusa.com)  
Internet <http://www.dungs.com/usa/>**

**Karl Dungs GmbH & Co. KG  
P.O. Box 12 29  
D-73602 Schorndorf, Germany  
Phone +49 (0)7181-804-0  
Fax +49 (0)7181-804-166  
e-mail [info@dungs.com](mailto:info@dungs.com)  
Internet <http://www.dungs.com>**